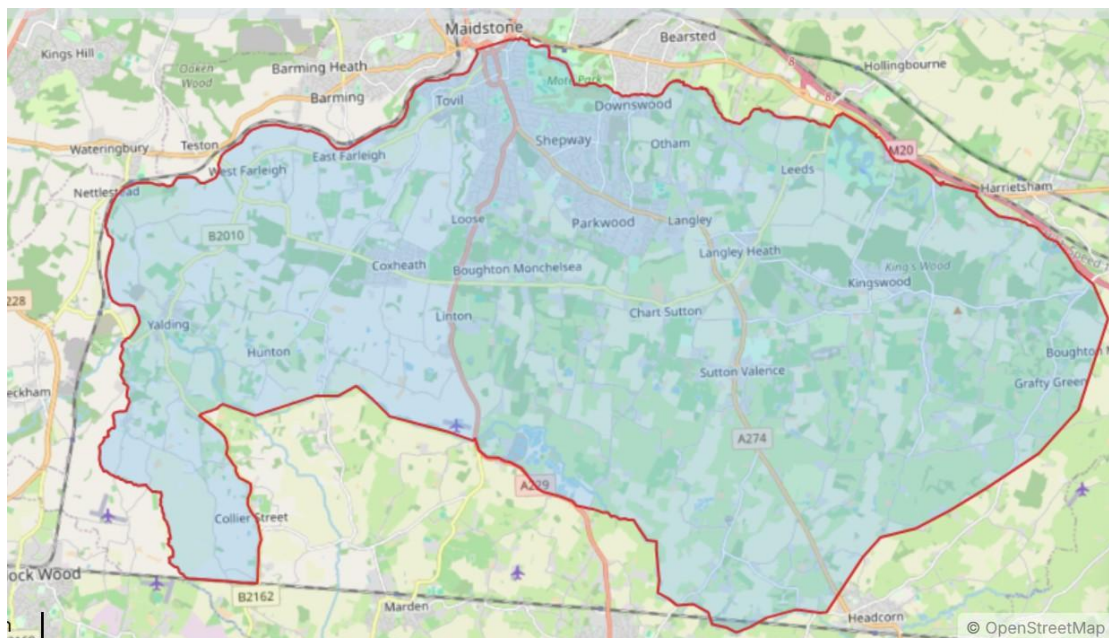




GREENSAND WAY FARM CLUSTER

Are you a farmer or landowner in this area? Join us!



Aims

To enable farmers and landowners along the Greensand Ridge south of Maidstone to thrive economically in a way that enhances nature and benefits people.

Objectives

To identify and connect with a significant number of farmers and landowners in the area defined our geography

To share practical advice and support, improve knowledge and understanding

To provide professional facilitation for the groups activities and to generate sufficient funds to be an effective cluster

To evaluate natural capital and understand nature finance opportunities for individual farms and for the cluster as a whole

To manage land in a way that enhances food security while having a net positive impact on nature.

To contribute to healthier soils, cleaner air and water, climate mitigation and adaptation, biodiversity gain.

To identify key opportunities for species recovery based on the unique geography, geology and habitat within the area.



Progress so far

Membership: 27 farmers and landowners, 23 members of the rural community, voluntary, private and statutory organisations

Incorporation: The Greensand Farm cluster is a Not-for-Profit Community Interest Company. Companies House Number 17092842

Steering Group: James Smith, David Catt, Oli Pascall, Macey Willard, Peter Paterson, Charles Tassell, Caroline Jessel

Financial Support: Maidstone Borough Council has funded a baseline ecological survey for the cluster and a facilitator for two years, shared with Marden cluster and employed through Kent Wildlife Trust.

Key Activities: Water quality improvements with focus on the River Beult and Loose Stream, Turtle dove support and habitat improvement, mink eradication, hedgerow health, soil improvement and pesticide/ herbicide minimisation.

Commitment

To join us you are only required to be keen on collaboration with neighbours for the potential wider benefits that can follow. You can attend cluster meetings when convenient or of interest to you.

If you can share your **SBI number** this will help with planning and raising funds but does not commit you to anything. The more hectares we cover as a cluster the more likely we are to attract serious funding.

For further information or to join please email crjessel@btinternet.com or call 07979770134

Or our new facilitator, Dave Shenton dave.shenton@kentwildlife.org.uk or call 07378 297605

Facebook ([1](#)) [Greensand Way Farm Cluster | Facebook](#)

